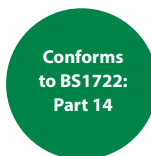


Benefits

- 358 security tight mesh configuration offers no climbing aids
- 76.2 x 12.7mm Mesh Pattern
- Strong 10mm vertical wires, reduces attack effectiveness
- Single layered fence with no additional clamp bars
- Anti tamper fixings for a secure installation
- Galvanised & polyester powder coated panels & posts
- Full length clamp bars
- Mitigates attack by hand and powered tools through tight mesh design
- Tested and approved to LPS1175 Issue 8 at Security Rating B3 (SR2) and entered into the BRE RED BOOK

Features

1. Polyester Powder Coated RHS Post
2. 10mm Vertical & 4mm Horizontal Wires
3. Full Length Clamp Bar
4. Security Fixings



HiSec SR2 Rated Fencing (B3 Rated Fencing under Issue 8) has been developed by Zaun in consultation with the Home Office as our premier high security system. Aimed at high profile and sensitive sites requiring the greatest perimeter protection.

The HiSec SR2 Rated Fencing solution is based on the original 358 HiSec system, but is even stronger. HiSec SR2 is manufactured with 4mm horizontal wires and 10mm diameter vertical wires with 76.2mm spacings, providing a strong barrier to anyone trying to gain unauthorised access to a site.

The SR2 rated fencing system has also achieved Secured by Design accreditation from the Association of Chief Police Officers and Security Rating certification to LPS1175 and entry into the Red Book from the Buildings Research Establishment (BRE) achieving the security rating B3 under issue 8 (SR2 under issue 7).

HiSec SR2 uses the RHS post configuration with a full length clamp bar and stainless steel through bolts, washers and nuts to leave no weakness in the fence line. Slotted fixing holes ensures the installation is easy and leaves a neat, flush fitting.

In spite of all this, HiSec SR2 presents a value solution that negates the need for a double skin 358 system or any additional clamp bars or fixings that you wouldn't expect in a standard mesh fencing system. This keeps installation costs down to a minimum.

HiSec SR2 can also be used with a range of fence toppings and integrated solutions to provide a full turnkey high security solution. Pedestrian and vehicle gates are also available to match the fence line.

Finish

All Zaun posts/panels/gates and painted auxiliary components (for example clamp-bars, slide bolts etc) benefit from a protective zinc layer and electrostatically applied polyester powder coating to BS1722 p16. Care is taken with pre-treatment to ensure sound adhesion between the zinc layer and the paint. In a UK C1 environment, as defined in ISO 12944 p2, this should ensure a useful life expectancy of the fence of at least 15-20 years. Life expectancy in all environments can be extended by maintenance of the fencing with regular washing. Useful life will be reduced if the fencing is damaged. Any coating damage should be repaired to reduce the effect on useful life.

Enhanced painting systems such as marine coatings are also available for improved life expectancy in C2-C5M environments.

Posts & Fixings

The HiSec Super SR2 perimeter security fencing system features a post and clamp bar configuration, providing a simple and easy method of installation. Supplied with stainless steel through bolts, washers and nuts and installed using either power or hand tools.

Sloping Ground

Panels can be stepped as required on the post. On steeper gradients it is recommended that taller panels are either part-buried or additional posts are used. Panels can also be sloped to follow lesser gradients.

Variations

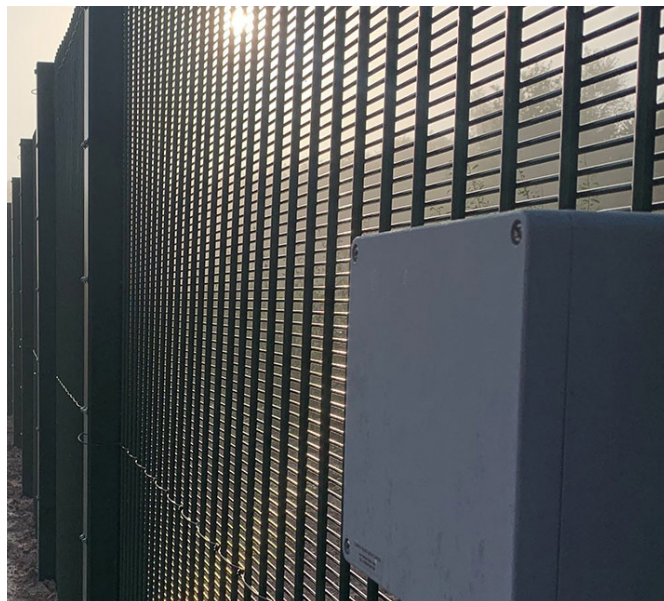
Posts are available in different lengths to accommodate panel heights and ground conditions. Additional variations are also available:

- Wall fixing, cranked posts or base plated
- Cranked, V Shape or Top Hat extensions for barbed or razor wire
- Extended posts for CCTV, electric fencing, lighting or physical security devices

Gates:

Pedestrian gates are single leaf 1.2m wide, (or width to suit), framed in a 50mm x 50mm RHS with Zaun HiSec mesh clad to the front face of the gate frame, with slide latch. Gate supplied with 2 x suitable gate posts.

Vehicle access gates are double leaf (single leaf vehicle gates available) 3.0m wide (or width to suit), framed in 50mm x 50mm RHS, with Zaun HiSec mesh clad to the front face of the gate frame, with drop bolts and slide latch. Gate supplied with 2 x suitable gate posts.

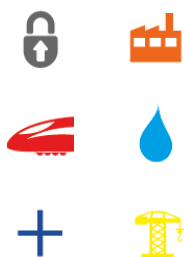


Specification

Height:	2007, 2438, 2997mm
Note: Additional heights available upon request	
Panel Width:	2515mm
Mesh Size:	76.2 x 12.7mm
Wire Tolerances to	10mm (9.88/10.12mm) Verticals
BSEN10218-2:	4mm (3.93/4.07mm) Horizontals
Wire Tensile Strength:	350-650N/mm ² within range of BS-EN 10223-4
Weld Shear Strength (%):	75% of tensile of wire in accordance with BS-EN 10223-4
Top Edge Projection:	Minimal Projections
Post Size:	80 x 80 mm
Clamp Bar Size:	80 x 5mm
Post Centres:	2440mm
Fixing Centres:	330mm
Fixings:	Stainless Steel Through Bolts, Nuts and Washers

Note: Zaun manufactures 358 from cut to length line wires; the panels are not cropped. They are supplied as standard with short protruding wires top and bottom. If flush panels are required, this should be requested at the time of enquiry.

Applications



Drawings

DWG and PDF drawings available from our website www.zaun.co.uk/drawings